

AFS International Group Pty Ltd

Trading as

# Australasian Fire & Safety

(RTO #6580)

## Confined Space training:

**Overview:** These Training Package Units are designed to deliver information to designated staff working in any industry or workplace. They hold accreditation as operations and support competency units for people studying for a Certificate III in Process Manufacturing MSM30116.

Participants on this course will gain understanding of the control of entry to confined spaces; for maintenance, servicing of vessels or other necessary reasons. This will include an understanding for work in or entry to confined spaces with due regard to relevant legislation and applicable Standards. It is expected that all persons entering the confined space, and the standby person, will be competent to enter a confined space.

### Course duration

8 hours (1 full day) – includes assessment

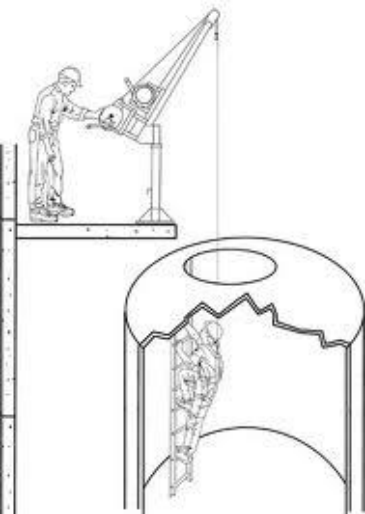
### Assessment criteria

Assessment is competency based.

The student's performance is assessed on satisfactory completion of the required assignments and workshops (in-class assessment activities).

### Students support

One-on-one support is available throughout the duration of the course.



### Course delivery

This program is ONLY available through:

A face to face session requiring the completion of 2 main assessment activities:

**Part A: Knowledge** Questioning (Written & Verbal)

**Part B: Skills** Structured Activity (Practical Demonstration)

Both of which will be completed on the day of training.

\* For submission and course dates refer to the course timetable at [www.afsrto.com.au](http://www.afsrto.com.au)

### Venue

At your site where we can use your systems and procedures i.e. permits, vessel entry etc.

### Minimum entry requirements

There are Language, Literacy & Numeracy (LLN) requirements for this training which include:

- Language; The ability to clearly communicate with other workers in a Confined Space team both verbally and in writing.
- Literacy; The ability to read and interpret an atmospheric monitor and then communicate the conclusions as being safe/ not safe and to determine the required actions. Writing is required to the level of completing required workplace reports/forms.
- Numeracy; ability to calculate working times, and exposure times where an exposure stand is applicable.

The foundation skills are not included as part of the courses. AFS recommends a minimum year 10 or equivalent of schooling prior to commencement of the course.

### Specific course requirements

- Enclosed shoes and neat casual or work clothing is essential.
- The practical session can be viewed as physically challenging so a certain level of fitness is required
- Participants are required to physically enter a confined space on the day of training



NATIONALLY RECOGNISED  
TRAINING

## Course Outline

### Confined Space training -

- (MSMPER200) Work in accordance with an issued permit
- (MSMPER205) Enter Confined Space
- (MSMWHS217) Gas Test Atmospheres
- (MSMPER202) Observe Permit Work

## Course Inclusions

Statement of Attainment and Confined Space Ticket -credit card size ID card (upon successful completion).  
Partial completion of the following Qualification:- Certificate III in Process Manufacturing.  
Course Information Manual.  
Writing materials and all PPE required to undertake the practical exercises for assessment.

## Learning Outcomes (Key Elements):

- Conclude confined space operations in accordance with procedures
- Work in accordance with confined space requirements
- Use safety equipment and personal protective equipment (PPE)
- Assess confined space for entry
- Apply for permit
- Identify the scope of the permit
- Prepare for gas testing
- Test gas
- Maintain equipment
- Prepare for the job
- Control the permit site
- Take appropriate action for potential incident
- Complete safety observer role
- Prepare for permitted work
- Work in accordance with an issued permit
- Complete permit to work

## How to apply?

Enrolments are accepted throughout the year; to enrol in this course you are required to:

- Complete and sign the enrolment form and send it back to AFS.

This can be completed either on-line **or** by downloading a hard copy form and returning it by email to AFS ([admin@afsрто.com.au](mailto:admin@afsрто.com.au)) or completed face to face at any AFS campus.

## Enrolment

On successful enrolment students will receive confirmation of their booking via email including venue and time of training details.

## Fees

Course fees local to Adelaide CBD are \$2,800.00 gst exempt for groups up to 15 at your site.  
Course fees in Regional South Australia are \$3,000.00 gst exempt for groups up to 15 at your site.

## Payment methods

- To be paid in full prior to the issue of certificates via instructions on invoice

## Job Prospects

Allows authorised work in or around a Confined Space within Australia or New Zealand.  
This is an employability skill.

### ➤ Further Information

Visit: [www.afsрто.com.au](http://www.afsрто.com.au)

Phone: +61 8 8352 8944

Email: [admin@afsрто.com.au](mailto:admin@afsрто.com.au)

RTO #6580

<http://training.gov.au/Organisation/Details/6580>

\*The information contained within this course flyer was correct at time of publication, Sept 2017. AFS reserves the right to alter or amend the material contained within this flyer as needed.



NATIONALLY RECOGNISED  
TRAINING